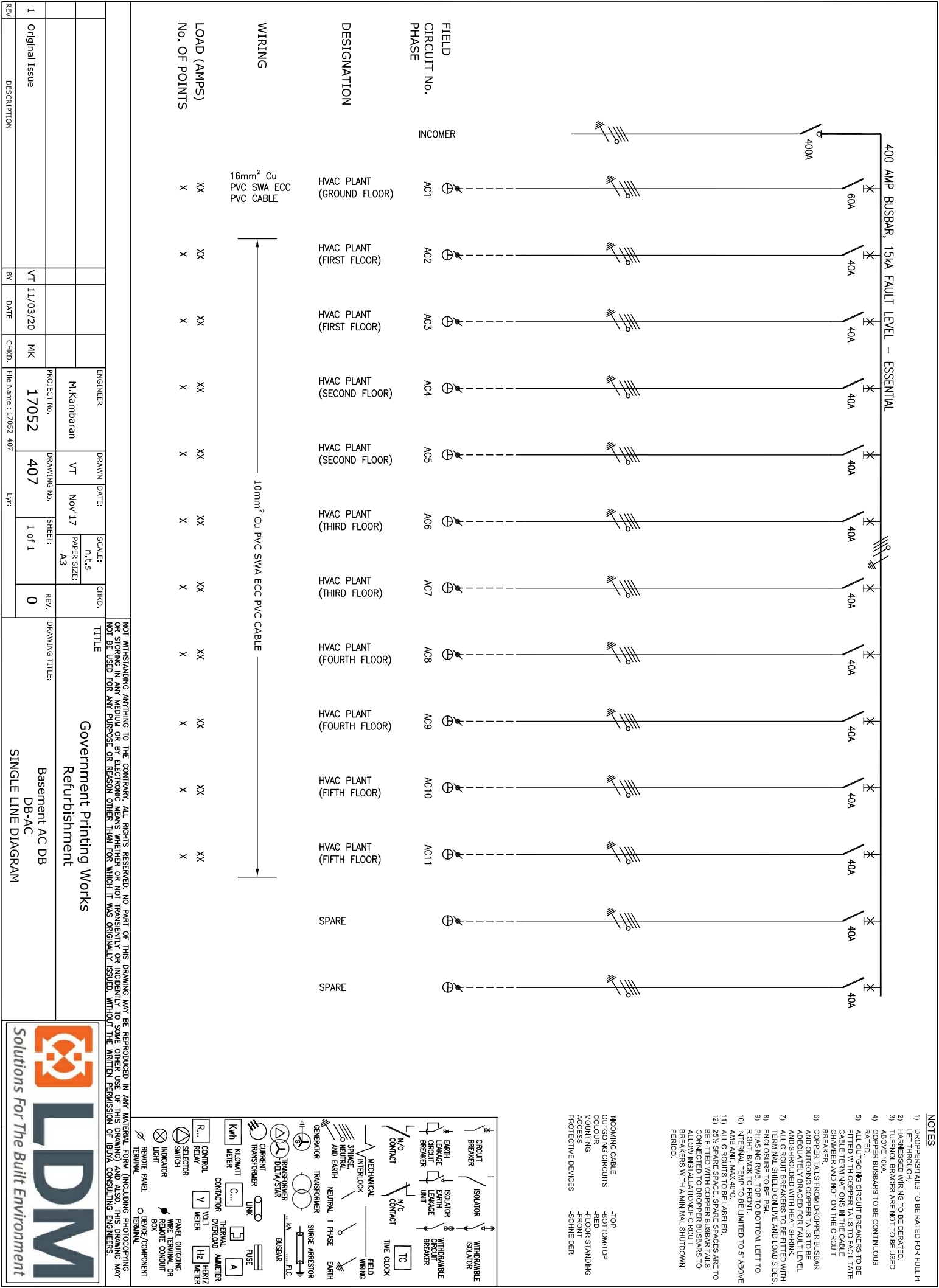
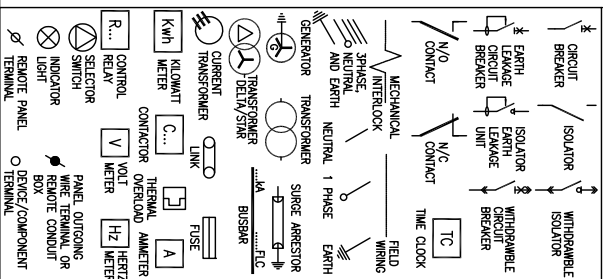


NOTES

- 1) DROPPERS/TAILS TO BE RATED FOR FULL IN LET THROUGH.
- 2) HARNESSED WIRING TO BE DERATED.
- 3) TUFNOL BRACES ARE NOT TO BE USED ABOVE 10kV.
- 4) DROPPER BUSBARS TO BE CONTINUOUS RATED.
- 5) ALL OUTGOING CIRCUIT BREAKERS TO BE FITTED WITH COPPER TAILS TO FACILITATE CABLE TERMINATIONS IN THE CABLE CHAMBER AND NOT ON THE CIRCUIT BREAKER.
- 6) COPPER TAILS FROM DROPPER BUSBAR TO BE FITTED WITH COPPER TAILS TO BE ADEQUATELY BRACED FOR FAULT LEVEL AND SHROUDED WITH HEAT SHRINK.
- 7) ALL CIRCUIT BREAKERS TO BE FITTED WITH TERMINAL SHIELD ON LIVE AND LOAD SIDES, ENCLOSURE TO BE IP54.
- 8) PHASING R/W, TOP TO BOTTOM, LEFT TO RIGHT, BACK TO FRONT.
- 9) INSULATED TO BE LIMITED TO 5' ABOVE AMBIENT. MAX 40°C.
- 10) INSULATED TO BE LIMITED TO 5' ABOVE AMBIENT. MAX 40°C.
- 11) ALL CIRCUITS TO BE LABELED.
- 12) 25% SPARE SPACE. SPARE SPACES ARE TO BE FITTED WITH COPPER BUSBAR TAILS CONNECTED TO DROPPER BUSBARS TO ALLOW INSTALLATION OF CIRCUIT BREAKERS WITH A MINIMAL SHUTDOWN PERIOD.

INCOMING CABLE
-TOP
-BOTTOM/TOP
-RED
-FLOOR STANDING
-FRONT
-SCHNEIDER
PROTECTIVE DEVICES



NOT WITHSTANDING ANYTHING TO THE CONTRARY, ALL RIGHTS RESERVED. NO PART OF THIS DRAWING MAY BE REPRODUCED IN ANY MATERIAL FORM (INCLUDING PHOTOCOPIING OR STORING IN ANY MEDIUM OR BY ELECTRONIC MEANS WHETHER OR NOT TRANSPARENTLY OR INCIDENTALLY TO SOME OTHER USE OF THIS DRAWING) AND ALSO, THIS DRAWING MAY NOT BE USED FOR ANY PURPOSE OR REASON OTHER THAN FOR WHICH IT WAS ORIGINALLY ISSUED, WITHOUT THE WRITTEN PERMISSION OF BIVA CONSULTING ENGINEERS.	
TITLE	
Government Printing Works Refurbishment	
DRAWING TITLE: Basement AC DB DB-AC	
SINGLE LINE DIAGRAM	
ENGINEER	DRAWN
M.Kambaran	VT
PROJECT No.	DRAWING No.
17052	407
DATE:	SHEET:
Nov'17	1 of 1
SCALE:	REV.
N.t.s	0
PAPER SIZE:	
A3	
CHKD.	
REV	DESCRIPTION
1	Original Issue
BY	DATE
VT	11/03/20
CHKD.	DATE
MK	
FILE Name : 17052_407	
LVT:	